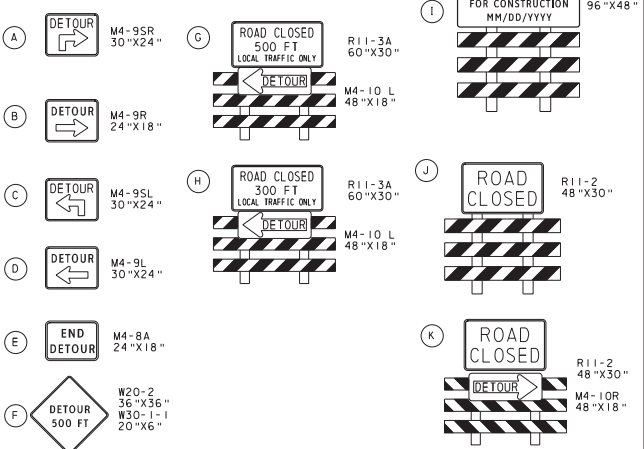
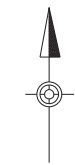
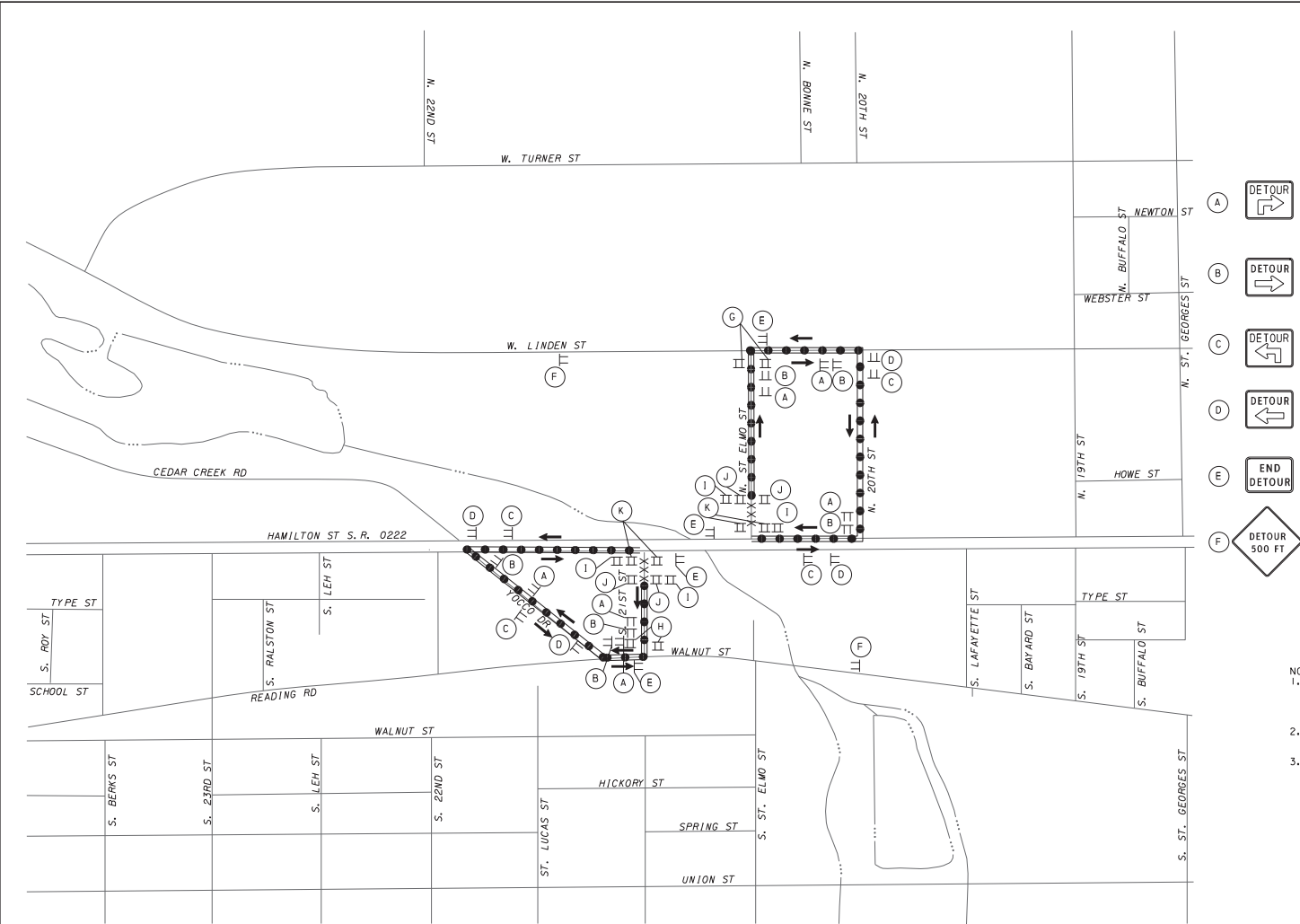


UNCONTROLLED WHEN PRINTED

USER: MPMS
 PLOT DATE: 10-27-2016 11:46:10 AM
 PLOT: DRIVER PERMITTED PDF, MPMS, PL100, WBLOCK, PL101, WBLOCK, PL101

DISTRICT	COUNTY	ROUTE	SECTION	SHEET
05-0	LEHIGH	0222	01B	12 OF 12
CITY OF ALLENTOWN				
REVISION NUMBER	REVISIONS			DATE BY



- NOTES:
1. MAINTAIN ACCESS AT ALL TIMES TO DRIVEWAYS ON S 21ST ST FROM WALNUT ST. MAINTAIN ACCESS AT ALL TIMES TO DRIVEWAYS ON N. ST ELMO ST FROM LINDEN AVE.
 2. REFER TO SHEETS 5,6,9, & 10 FOR PLACEMENT OF SIGNS ⓐ & ⓑ
 3. INSTALL RAILS ON BOTH SIDES OF BARRICADE FOR SIGNS ⓐ & ⓑ

- LEGEND
- XXXXX AREA OF CLOSURE
 - DETOUR ROUTE
 - TRAFFIC FLOW
 - TT TEMPORARY SIGN
 - || TYPE III BARRICADE
 - (A) SIGN LETTER

S. 21ST ST DETOUR LENGTH = 0.22 MILES
 MAP NOT TO SCALE
 N. ST ELMO ST DETOUR LENGTH = 0.20 MILES
 MAP NOT TO SCALE



DETOUR PLAN
 N. ST ELMO STREET &
 S. 21ST STREET CLOSED

TRAFFIC CONTROL PLAN

JV NO. 175 / MPMS 85693
 DES+ KAD DWG+ MLK CKD+ MR

APPROVED FOR CONSTRUCTION