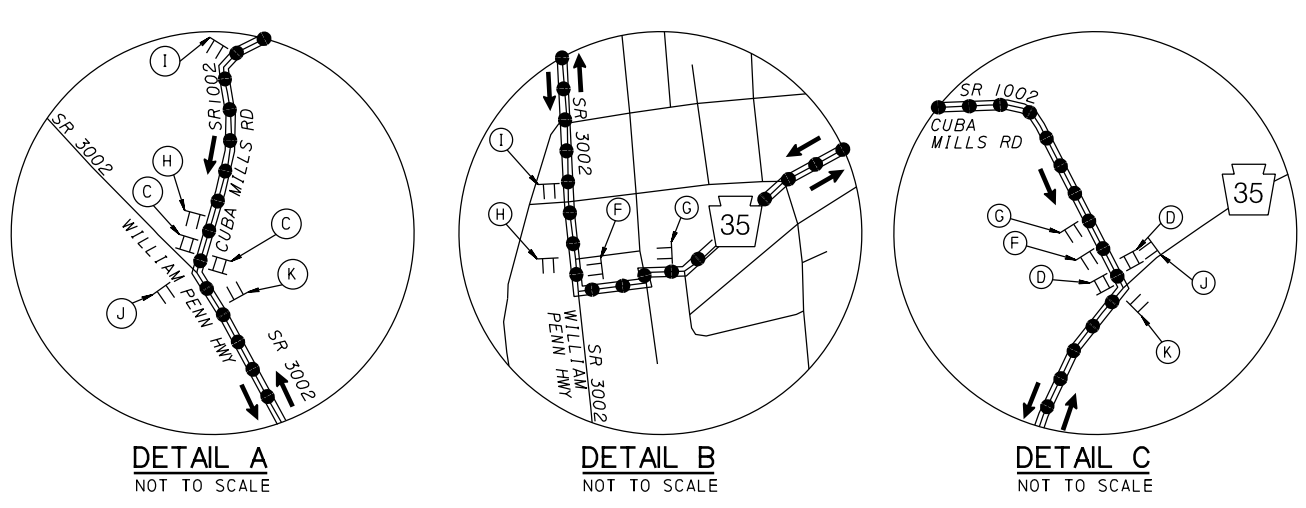
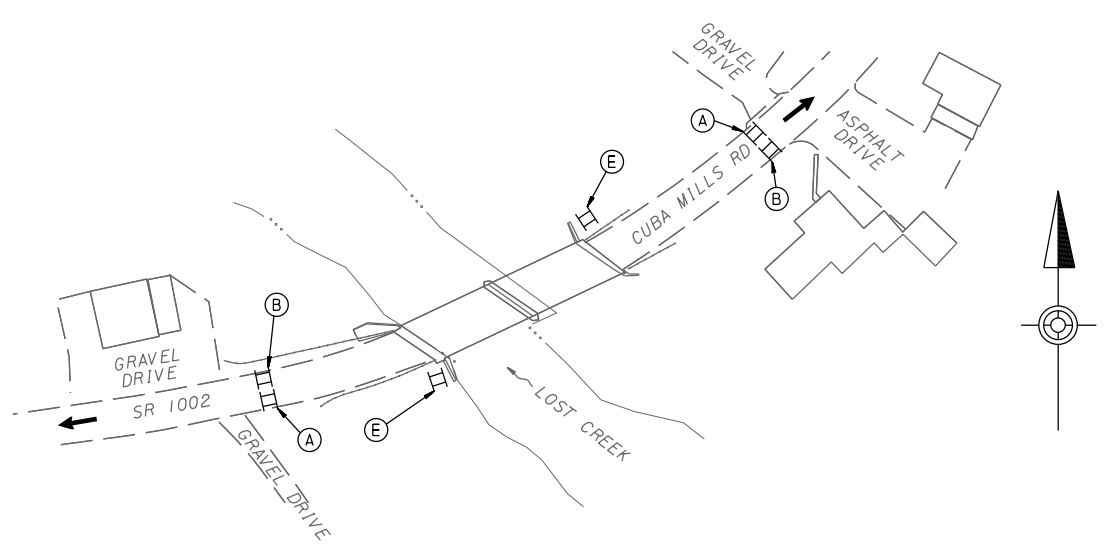
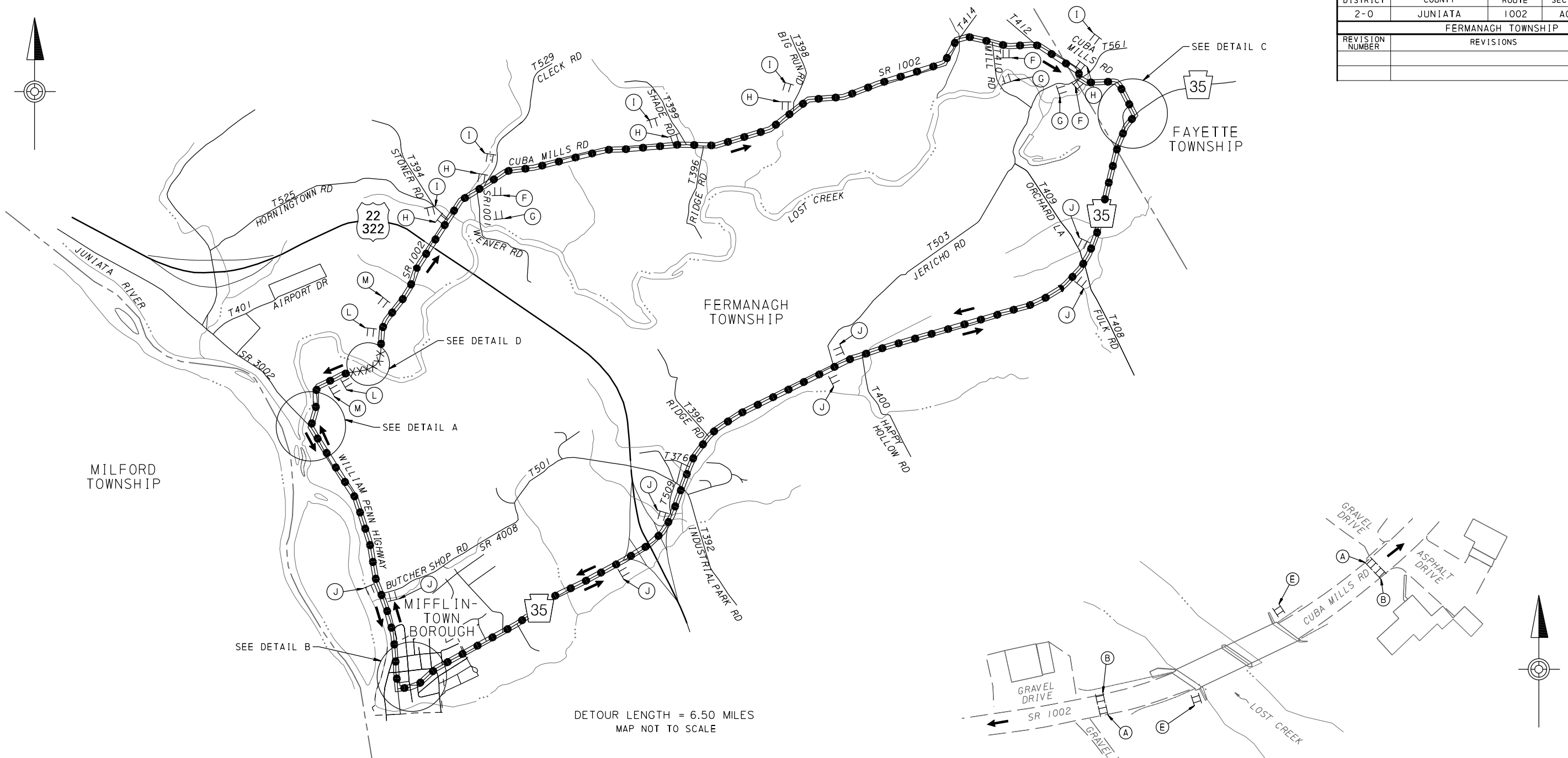
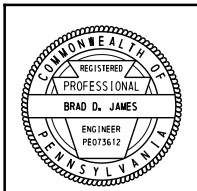


DISTRICT	COUNTY	ROUTE	SECTION	SHEET	
2-0	JUNIATA	1002	A01	2 OF 3	
FERMANAGH TOWNSHIP					
REVISION NUMBER	REVISIONS			DATE	BY



- LEGEND**
- XXXXX AREA OF CLOSURE
 - DETOUR ROUTE
 - ⇄ TRAFFIC FLOW
 - TT TEMPORARY SIGN
 - || TYPE III BARRICADE
 - (A) SIGN LETTER

JV NO. 053 / MPMS 4214

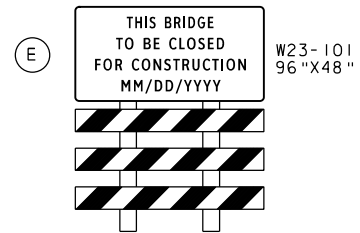
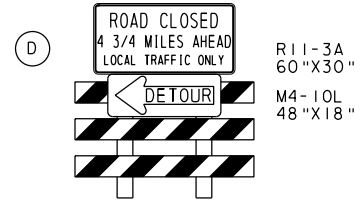
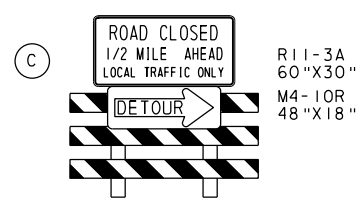
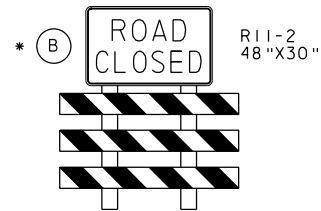
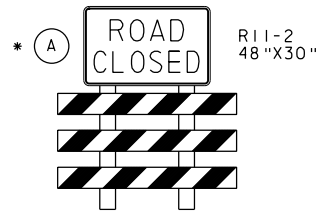


DETOUR PLAN
SR 1002
(CUBA MILLS ROAD)
CLOSED

TRAFFIC CONTROL PLAN

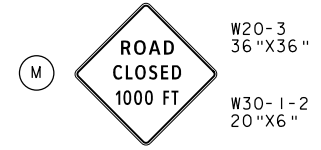
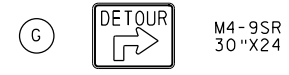
USER: jpowell | PLOT DRIVER: PgmDOT_PDF_Mono.plt | PLOT DATE: 07-19-2016 2:54:00 PM
 PATH: | FILE: 02-DETOUR.PLAN.dgn | MODEL: dwg | fou | t

DISTRICT	COUNTY	ROUTE	SECTION	SHEET	
2-0	JUNIATA	1002	A01	3 OF 3	
FERMANAGH TOWNSHIP					
REVISION NUMBER	REVISIONS			DATE	BY



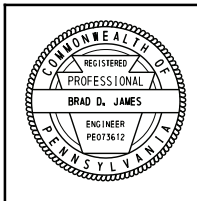
* TYPE III BARRICADES TO EXTEND ACROSS ENTIRE ROADWAY

* TYPE III BARRICADES TO EXTEND ACROSS ENTIRE ROADWAY



USER: jpowell | PLOT DRIVER: PgmDOT_PDF_Mono.plt | PLOT DATE: 07-19-2016 2:54:16 PM
 PATH: FILE: 03-Advance_Signing | MODEL: Dwg | Plot

DETOUR PLAN
 SR 1002
 (CUBA MILLS ROAD)
 CLOSED



TRAFFIC CONTROL PLAN

JV NO. 053 / MPMS 4214

DES: RAH | DWG: RAH | CKD: MDD