

# Construction Update

## Pennsylvania Rapid Bridge Replacement Project

### Issue 3: Spring 2016



# Over 200 Bridges to be Replaced Across Pennsylvania in 2016

Construction is starting up again across Pennsylvania as the second year of the Rapid Bridge Replacement Project gets under way.

In 2016 at least 224 bridge replacements are planned. From Crawford to Delaware and from Wayne to Greene, most counties in the state will see at least one bridge replacement project this year.

During the project's kick-off year, crews were able to complete 50 bridge replacements, mostly in the southwest and northeast regions of the state. Most of the construction began in June of 2015 as crews in the east, west and central regions of the state got started on removing and replacing deteriorating bridges and culverts, replacing them with structures designed to last the next 100 years. Work continued throughout the year, even into the winter months in some cases as the milder temperatures allowed some construction to keep going long after it would normally have to stop.

On many of those new crossings that were completed some drivers noticed a bump when they drove across the new bridge deck and wondered why a new

bridge would be built with a bump. That bump was only temporary though. The final step in the bridge's construction is the placement of a layer of a special polyester concrete designed to protect the deck from the wear and tear brought about by Pennsylvania's harsh winters, and reduce the long term maintenance costs. However, that material can only be applied when temperatures are regularly above 50 degrees and after the bridge concrete has cured for at least 30 days. Short term single lane closures have been scheduled to begin in early June for these final paving operations, which should take about two days per bridge to complete.

So in addition to finishing up the remaining paving work on bridges constructed in 2015, crews will be starting the busiest year of the project so far, with around 224 bridges scheduled for replacement statewide.



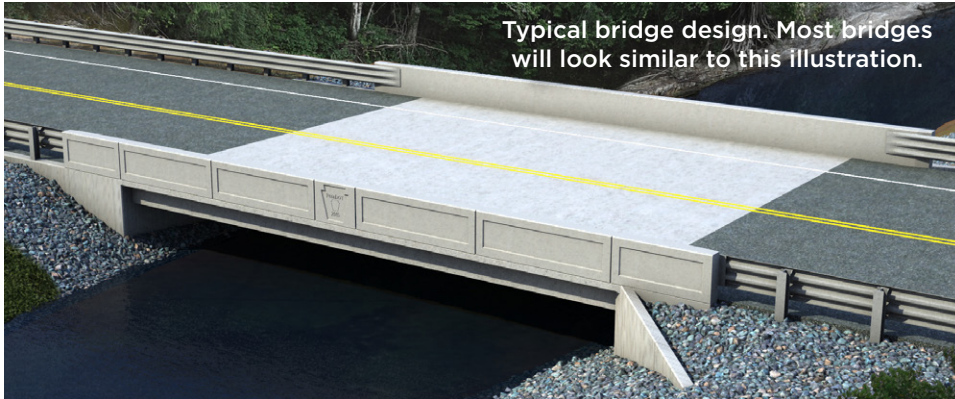
JV 366, SR 3013, Buffalo Creek, Armstrong County



JV 542, SR 56, Little Pucketa Creek, Westmoreland County



JV 420, Bull Creek Road, Bull Creek, Allegheny County



Typical bridge design. Most bridges will look similar to this illustration.

## About the Rapid Bridge Replacement Project

The Rapid Bridge Replacement Project will replace 558 of Pennsylvania's structurally deficient bridges by the end of 2017.

The bridges included in the project are primarily crossings on smaller state highways, many in rural areas, rather than interstate bridges or large river crossings.

The project will be financed, designed, constructed and maintained for the next 25 years by Plenary Walsh Keystone Partners (PWKP), a consortium of some of the nation's most experienced infrastructure designers and builders, including The Plenary Group, Walsh Investors, Walsh Construction Company, Granite Construction Company, HDR and Walsh Infrastructure Management.

Another 11 Pennsylvania based subcontractors and consultants have also been involved in the project from the beginning, while many more are currently bidding for new work and building the bridges already under construction.

## Project Facts, by the Numbers

- **558** bridges included for replacement
- **411** are single-span bridges (they cross from one side to the other without needing a pier in the middle)
- **27** are multi-span crossings
- **120** are culverts
- Average bridge is about **60** feet in length
- **62** will be more than **100** feet long
- **417** bridges will be constructed using **2,291** pre-stressed concrete beams
- Laid end to end the beams would stretch more than **27** miles
- The beams will use **6.1 million** linear feet of steel strand, or **1,155** miles

Each bridge has a 25 year warranty that makes PWKP responsible for general maintenance such as bridge inspections, filling potholes and making the day-to-day repairs due to accidents and normal wear and tear. PennDOT will maintain responsibility for roadway striping and snowplowing and will retain ownership of all the structures.



**Questions about bridge construction near you?**

visit [www.PaRapidBridges.com](http://www.PaRapidBridges.com)

or call 877-444-9990

## In the Eastern Region



Construction crews in the eastern region of the state made a rapid start to 2016, completing two bridges over the winter.

With 15 bridges reconstructed in the east to-date, approximately 70 more are scheduled to begin during the 2016 construction season.

The eastern region will have work happening in 19 different counties across PennDOT Districts 4, 5, 6 and 8 in 2016. PennDOT District 8 will see the bulk of the work in the east this year, with construction on 30 bridges starting in seven counties (Adams, Cumberland, Dauphin, Franklin, Lancaster, Perry and York).

To help manage some of this construction, Walsh Granite recently opened up a satellite office in Camp Hill. With eight bridges planned in Lancaster County, seven in York County, four in Adams County, four in Perry County, three in Franklin County and one in Dauphin County beginning soon, crews operating out of that location are sure to be kept busy.

In Northeastern Pennsylvania, crews will also be hard at work in Districts 4 and 5. Construction will begin on 17 bridges in District 4, with six in Susquehanna County, five in Wayne County, two each in Luzerne and Wyoming counties, and one each in Pike and Lackawanna counties.

PennDOT District 5 will see construction happening on 19 bridges, with 11 in Monroe County, four in Berks County, two in Schuylkill, and one each in Carbon and Northampton counties. Construction will also begin in PennDOT District 6, with one bridge starting in Delaware County in August.

The majority of work in the East Region will be performed by a growing list of local subcontractors that include Clearwater Construction, CH&D Enterprises, Doli Construction, Khors, Leeward Construction, and R. C. Young. Walsh Granite will also self-perform some of the 2016 work.



JV 187, SR 940, Tobyhanna Creek/Pocono Lake, Monroe County



JV 207, SR 924, Kelly Run, Schuylkill County

# Eastern Region - Photos



## In the Central Region



PennDOT engineering District 3 will see approximately 24 bridges replaced in 2016, including five that are already underway: JV 90, JV 94, JV 98, JV 102 and JV 131. District 3 includes Montour, Columbia, Lycoming, Tioga, Bradford and Sullivan as well as Northumberland, Snyder, and Union counties.

District 2 will also see approximately 24 bridges replaced this year, in Centre, Clearfield, Clinton, Elk, Juniata, McKean, Mifflin, and Potter Counties with one, JV 32, already under way in Centre County.

District 9 covers Bedford, Blair, Cambria, Fulton, Huntingdon, and Somerset counties, and will have approximately 21 bridges replaced in 2016. Two are already under construction, with one in Bedford JV 313, and one in Somerset County, JV 354.

Subcontractors performing the work in the Central Region include Glenn Hawbaker, Rylind Construction, Clearwater Construction, and CH & D Construction. Walsh Granite will also self-perform several bridge projects.



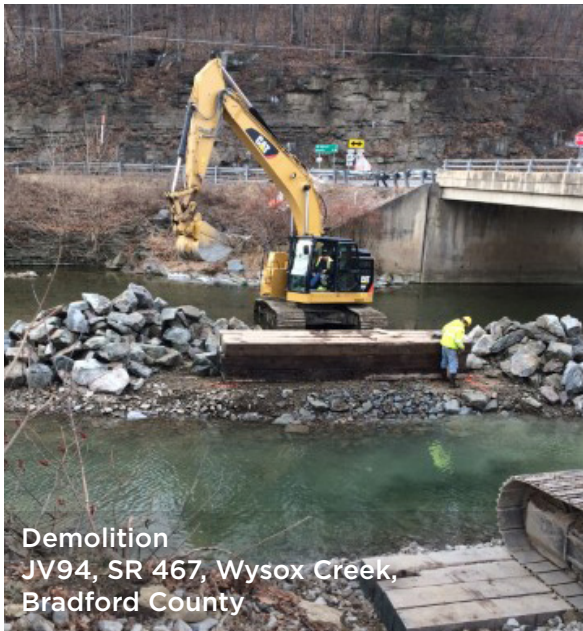
## Central Region - Photos



JV94, SR 467, Wysox Creek, Bradford County



JV131, SR 3001, Elk Run, Tioga County



Demolition  
JV94, SR 467, Wysox Creek,  
Bradford County



JV98, SR 706, Ross Creek, Bradford County

## In the Western Region



As Pennsylvania was enjoying a mild winter, construction crews were gearing up to start a busy year of bridge reconstruction in the western region. With 23 bridges completed in 2015, sights are set on replacing approximately 80 bridges during the 2016 construction season.

PennDOT District 11 (Allegheny, Beaver and Lawrence Counties) will experience the most reconstruction activity in the region with 37 bridges targeted for replacement. Of those 37 bridges, 21 will be replaced in Allegheny County, six bridges in Beaver County and 10 bridges in Lawrence County. District 12 (Washington, Westmoreland, Fayette and Greene counties) will also be busy this year with 29 bridges scheduled for reconstruction including 10 in Fayette County, nine in Washington County, six in Westmoreland and four in Greene County.

To the north in District 1 (Erie, Warren, Forest, Venango, Mercer and Crawford counties), Warren County will see a bridge replacement on Old Route 77 and four bridge replacement projects will take place around Crawford County. Work crews will also be busy this year in PennDOT District 10 (Butler, Clarion, Jefferson, Armstrong and Indiana counties) with nine bridges scheduled for replacement including three in Armstrong County, two in Butler County, three in Indiana County and one in Jefferson County.

Subcontractors working on various bridge replacement projects throughout the Western Region include Mekis Construction, Alvarez, Walsh II, Steel Core Construction, M.A. Beech Corporation and CH&D. Walsh Granite will also self-perform several projects.





# Western Region - Photos



## 2016 Bridge Construction By County

A bid letting date schedule for these structures is posted to [www.parapidbridges.com](http://www.parapidbridges.com). Four more lettings are scheduled through the end of June for 2016 construction. Bid lettings for 2017 will begin in August.

